



METAL STAMPER

PRODUCT
CATALOG



QUALITY

PRECISION

SPEED

**498 Buffalo Dr
El Paso TX 79928**



How Ep Metal Stamper Started

Ep Metal Stamper was founded in 2000 under the name “Manufacturera Goertzen y Asociados”. Established by Franz Goertzen, who brought with him extensive experience in die-making and engineering, the company began as a small workshop dedicated to providing customized metal stamping solutions. From the very beginning, the vision was clear: to deliver high-quality products to the trailer manufacturing industry, with a focus on innovation.

Index

CONTENT	PAGE
Smooth Fenders	2
Aluminum Fenders	3
Diamond Plate Fenders	4
Double Broke Fenders	5
2k Suspension Kit	6
3.5k Single Suspension Kit	7
3.5k Tandem Suspension Kit	8
7k Suspension Kit	9
7k HD Suspension Kit	10
7k HD Suspension Kit + 1 Long	11
10k Suspension Kit	12
12k Suspension Kit	13
U-Bolt 2 3/8 & U-Bolt 3 Kit	14
Leaf Springs	16
Chains, Stake Pockets & Ratchet	20
Adjustable Channels, Jack, Mount & Shoe	21
Axle saddles & Wire Clips	22
Hinges & Miscellaneous	23
Hardware	24

SMOOTH FENDERS



SINGLE AXLE



TANDEM AXLE WITH TEARDROP



TANDEM AXLE



SINGLE AXLE LINER



TANDEM AXLE LINER

ALUMINIUM FENDERS



SINGLE AXLE



TANDEM AXLE WITH TEARDROP



TANDEM AXLE



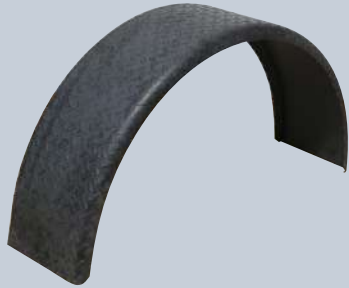
SINGLE AXLE LINER



TANDEM AXLE LINER

SINGLE AXLE WIDTH RANGE 7" - 11 3/4"
TANDEM AXLE WIDTH RANGE 9" - 11 3/4"
FENDER LENGTH & HEIGHT ARE MADE TO YOUR SPECIFICATIONS

DIAMOND PLATE FENDERS



SINGLE AXLE



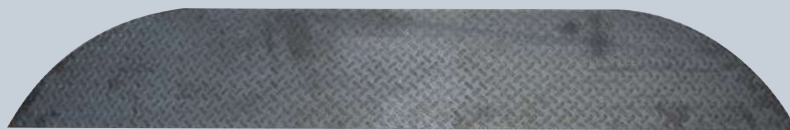
TANDEM AXLE WITH TEARDROP



TANDEM AXLE



SINGLE AXLE LINER



TANDEM AXLE LINER

DOUBLE BROKE FENDERS



SINGLE AXLE



TANDEM AXLE WITH TEARDROP



TANDEM AXLE



SINGLE AXLE LINER



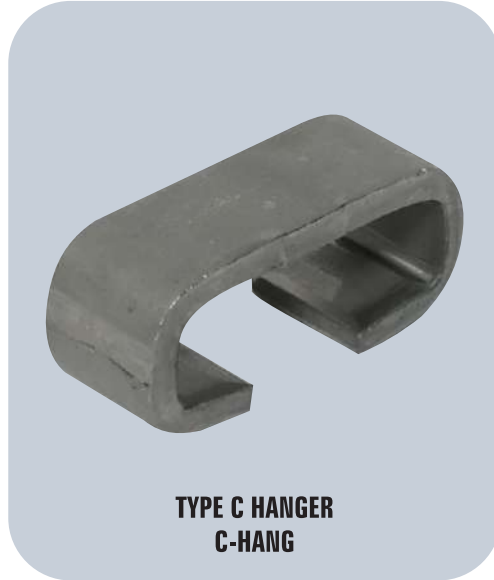
TANDEM AXLE LINER

SINGLE AXLE WIDTH RANGE 7" - 11 3/4"
TANDEM AXLE WIDTH RANGE 9" - 11 3/4"
FENDER LENGTH & HEIGHT ARE MADE TO YOUR SPECIFICATIONS

2K SUSPENSION KIT



**2K FRONT HANGER
HANG-F2K**



**TYPE C HANGER
C-HANG**



**9/16" GRIPCO NUT
TUE-010**



**9/16" X 3" BOLT
TOR-0004**

KIT CONTENT

CODE	QUANTITY
HANG-F2K	2 PIECES
C-HANG	2 PIECES

CODE	QUANTITY
TUE-010	2 PIECES
TOR-0004	2 PIECES

3.5K SINGLE SUSPENSION KIT



**2K FRONT HANGER
HANG-F2K**



**2K REAR HANGER
HANG-R2K**



**SHACKLE STRAP 3 1/8"
SHKL-3.125**



**9/16" X 3" BOLT
TOR-0004**



**9/16" GRIPCO NUT
TUE-010**

KIT CONTENT

CODE	QUANTITY
HANG-F2K	2 PIECES
HANG-R2K	2 PIECES
SHKL-3.125	4 PIECES

CODE	QUANTITY
TOR-0004	6 PIECES
TUE-010	6 PIECES

3.5K TANDEM SUSPENSION KIT



**3.5K EQUALIZER
EQUAL-3.5K**



**3.5K HANGER
HANG-3.5K**



**SHACKLE STRAP 3" X 1/8"
SHKL-3.125**



**9/16" X 3" BOLT
TOR-0004**



**9/16" GRIPCO NUT
TUE-010**

KIT CONTENT

CODE	QUANTITY
EQUAL-3.5K	2 PIECES
HANG-3.5K	6 PIECES
SHKL-3.125	8 PIECES

CODE	QUANTITY
TOR-0004	14 PIECES
TUE-010	14 PIECES

7K SUSPENSION KIT



**CAL4 EQUALIZER
EQUAL-7K-L**



**FRONT HANGER
HANG-F7K-L**



**CENTRAL HANGER
HANG-C7K-L**



**REAR HANGER
HANG-R7K-L**



**9/16" X 3 1/2" BOLT
TOR-0003**



**9/16" GRIPCO NUT
TUE-010**



**7/8" EQUALIZER BOLT
TOR-0006**



**7/8" CASTLE NUT
TUE-007**



**1/8" COTTER PIN
CHA-0001**

KIT CONTENT

CODE	QUANTITY
EQUAL-7K-L	2 PIECES
HANG-F7K-L	2 PIECES
HANG-C7K-L	2 PIECES
HANG-R7K	2 PIECES
TOR-0006	2 PIECES

CODE	QUANTITY
TUE-010	8 PIECES
TOR-0003	8 PIECES
TUE-007	2 PIECES
CHA-0001	2 PIECES

7K HD SUSPENSION KIT - 4"



**5/16" HD EQUALIZER
EQUAL-7K-H**



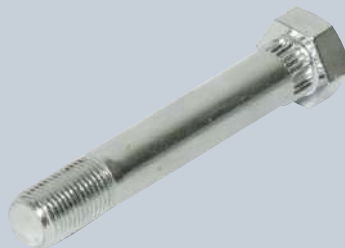
**HD FRONT HANGER
HANG-F7K-H**



**HD CENTRAL HANGER
HANG-C7K-H**



**HD REAR HANGER
HANG-R7K-H**



**9/16" X 3 1/2" BOLT
TOR-0003**



**9/16" GRIPCO NUT
TUE-009**



**7/8" EQUALIZER BOLT
TOR-0006**



**7/8" CASTLE NUT
TUE-007**



**1/8" COTTER PIN
CHA-0001**

KIT CONTENT

CODE	QUANTITY
HANG-F7K-H	2 PIECES
HANG-C7K-H	2 PIECES
HANG-R7K-H	2 PIECES
EQUAL-7K-H	2 PIECES
TOR-0003	8 PIECES

CODE	QUANTITY
TUE-009	8 PIECES
TOR-0006	2 PIECES
TUE-007	2 PIECES
CHA-0001	2 PIECES

7K HD SUSPENSION KIT + 1" LONG



**HEAVY EQUALIZER
EQUAL-7K-H**



**FRONT HANGER + 1 LONG
HANG-F7K-HXL**



**CENTRAL HANGER + 1 LONG
HANG C7K-HXL**



**REAR HANGER + 1 LONG
HANG-R7K-HXL**



**9/16" X 3 1/2" BOLT
TOR-0003**



**9/16" GRIPCO NUT
TUE-009**



**7/8" EQUALIZER BOLT
TOR-0006**



**7/8" CASTLE NUT
TUE-007**



**1/8" COTTER PIN
CHA-0001**

KIT CONTENT

CODE	QUANTITY
EQUAL-7K-H	2 PIECES
HANG-F7K-HXL	2 PIECES
HANG C7K-HXL	2 PIECES
HANG-R7K-HXL	2 PIECES
TOR-0006	2 PIECES

CODE	QUANTITY
TOR-0003	8 PIECES
TUE-009	8 PIECES
CHA-0001	2 PIECES
TUE-007	2 PIECES

10K SUSPENSION KIT



**10K EQUALIZER
EQUAL-10K**



**10K FRONT HANGER
HANG-F10K**



**10K CENTRAL HANGER
HANG-C10K**



**10K REAR HANGER
HANG-R10K**



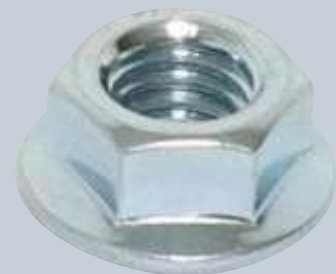
**1" x 5 1/2" BOLT
TOR-0013**



**3/4" X 4 1/4" BOLT
TOR-0011**



**3/4" NUT
TUE-010**



**1" FLANGE NUT
TUE-011**

KIT CONTENT

CODE	QUANTITY
EQUAL-10K	2 PIECES
HANG-F10K	2 PIECES
HANG-C10K	2 PIECES
HANG-R10K	2 PIECES

CODE	QUANTITY
TOR-0013	2 PIECES
TOR-0011	4 PIECES
TUE-010	4 PIECES
TUE-011	2 PIECES

12K SUSPENSION KIT



**12K EQUALIZER
EQUAL-12K**



**12K FRONT HANGER
HANG-F12K**



**12K CENTRAL HANGER
HANG-C12K**



**12K REAR HANGER
HANG-R12K**



**1" x 5 1/2" BOLT
TOR-0013**



**1" FLANGE NUT
TUE-011**



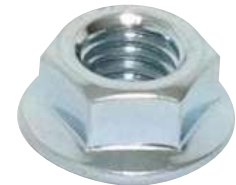
**1 1/8" x 6" BOLT
TOR-0012**



**1 1/8" FLANGE NUT
TUE-012**



**1/2" X 4 1/2" SPRING
KEEPER BOLT
TOR-0014**



**1/2" FLANGE NUT
TUE-001**

KIT CONTENT

CODE	QUANTITY
EQUAL-12K	2 PIECES
HANG-F12K	2 PIECES
HANG-C12K	2 PIECES
HANG-R12K	2 PIECES
TOR-0013	4 PIECES
TUE-0011	4 PIECES

CODE	QUANTITY
TOR-0012	2 PIECES
TUE-0012	2 PIECES
TUE-001	4 PIECES
TOR-0014	4 PIECES

U-BOLT 2 3/8" KIT



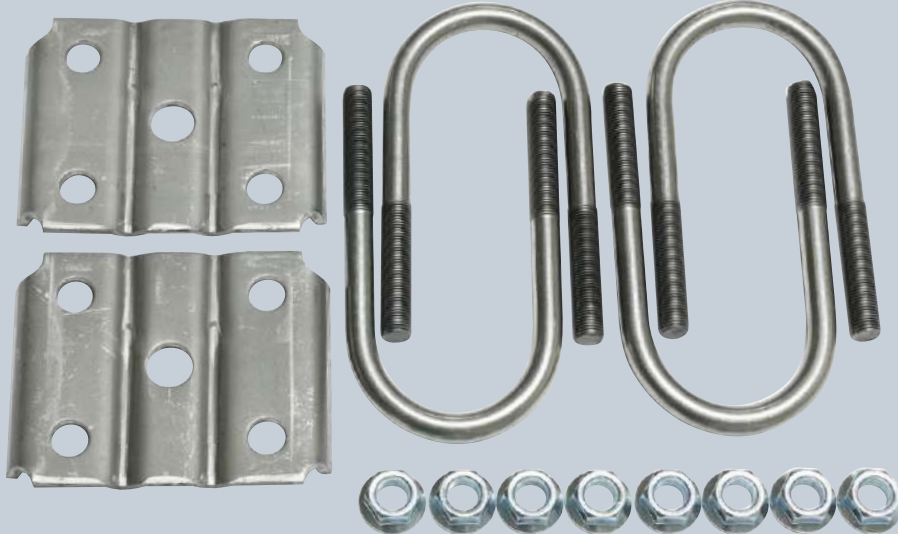
**3.5K AXLE PLATE
UBPL-2.375**



**1/2" FLANGE NUT
TUE-008**



**U-BOLT 2 3/8"
UBL-2.375**



U-BOLT 2 3/8" KIT

KIT CONTENT

CODE	QUANTITY
UBPL-2.375	2 PIECES
TUE-008	8 PIECES
UBL-2.375	4 PIECES

U-BOLT 3" KIT



**7K AXLE PLATE
UBPL-3**



**1/2" FLANGE NUT
TUE-005**



**U-BOLT 3"
UBL-3**



**U-BOLT 3 KIT
REINFORCED AVAILABLE WITH 9/16" U-BOLTS AND NUTS**

KIT CONTENT

CODE	QUANTITY
UBPL-3	2 PIECES
TUE-005	8 PIECES
UBL-3	4 PIECES

LEAF SPRINGS



**750 LBS SLIPPER
LFS-750S**



**2,900 LBS SLIPPER
LFS-2900S**



**4,000 LBS SLIPPER
LFS-4000S**

LEAF SPRINGS



5,000 LBS 2 1/2"
LFS-5000S



5,000 LBS 3"
LFS-6000S

LEAF SPRINGS



1,750 LBS
LFS-1750



1,800 LBS
LFS-1800



2,400 LBS
LFS-2400

LEAF SPRINGS

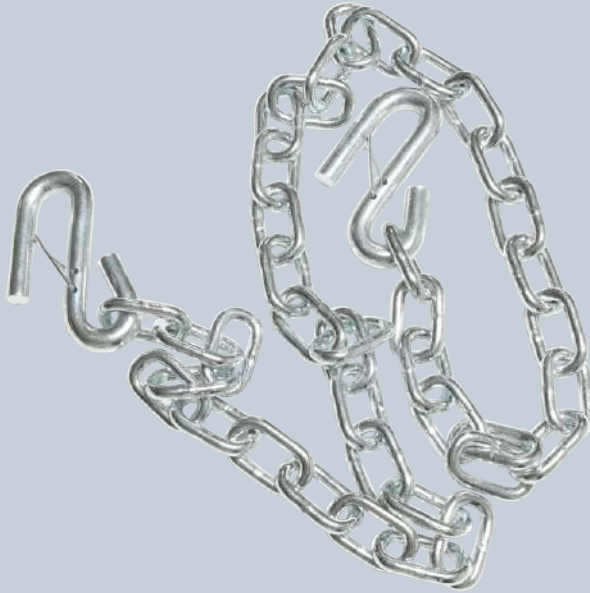


2,900 LBS
LFS-2900



3,300 LBS
LFS-3300

CHAINS



1/4" GALVANIZED CHAIN WITH 2 HOOKS
CAD-001



3/8" TROPICALIZED CHAIN
CAD-002

STAKE POCKETS



OPEN STAKE POCKET
POK03486231



CLOSED STAKE POCKET
POKC3486231

ADJUSTABLE CHANNELS



**5 POSITION CHANNEL
CANAL.6**



**3 POSITION CHANNEL
CANAL.4**

JACK, MOUNT & LEG



**2K JACK
EPJA2K**

**2K JACK SHOE
JABA2K**

**2K JACK MOUNT
JASAD2K**

AXLE SADDLES



WIRE CLIPS



HINGES



**RIGHT HINGE
TRGATHI -R**



**LEFT HINGE
TRGATHI-L**

MISCELLANEOUS



**7K LIGHT EQUALIZER 1/4\"
EQUAL-7K-M**



**3.5K SHORT HANGER
HANG-3.5KC**



**HANDLE
TAR-HANDLE**



**TRAILER STRAP WINCH
EPMAT-M**



**2K AXLE PLATE
UBPL-2**



**SHACKLE STRAP 3 1/2\"
SHKL-3.5**

HARDWARE



**7/8" EQUALIZER BOLT
TOR-0006**



**7/8" CASTLE NUT
TUE-007**



**1/8" COTTER PIN
CHA-0001**



**DRIVE IN GREASE FITTING
GRA-1/4**



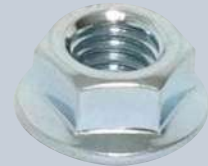
**9/16" X 3 1/2" BOLT
TOR-0003**



**9/16" GRIPCO NUT
TUE-010**



**9/16" X 3" BOLT
TOR-0004**



**1/2" FLANGE NUT
TUE-001**



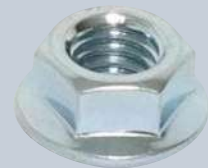
**3/4" X 4 1/4" BOLT
TOR-0011**



**3/4" NUT
TUE-010**



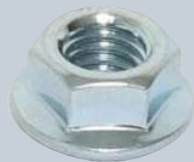
**1" X 5 1/2" BOLT
TOR-0013**



**1" FLANGE NUT
TUE-011**



**1 1/8" x 6" BOLT
TOR-0012**



**1 1/8" FLANGE NUT
TUE-012**



**1/2" X 4 1/2"
SPRING KEEPER BOLT
TOR-0014**



**1/4" X 2 1/2" WOOD BOLT
TOR-0010**



**1/4" X 2 1/4" WOOD BOLT
TOR-009**



**1/4" X 2" WOOD BOLT
TOR-008**



METAL STAMPER

Need something custom?

This catalog showcases our most popular trailer parts, but our capabilities go far beyond. If you don't see what you're looking for or need a custom solution, contact us—we're here to help.



METAL STAMPER

**498 Buffalo Dr
El Paso TX 79928**

EP Metal Stamper is a certified manufacturer of High-Quality Trailer Components, serving OEM trailer manufacturers throughout North America.

Founded in the year 2000 by mechanical engineer Franz Goertzen, the company has over two decades of experience in metal stamping, forming, and custom fabrication.

We operate from our 8,682 m2 (93,440 ft2) ISO 9001 certified plant in Cuauhtémoc, Chihuahua, Mexico, where we produce a wide range of precision metal parts, including:

***Suspension Kits - U-Bolt Kits - Fenders
Adjustable Channels - Trailer Jacks
Safety Chains - Hinges - Custom Components***

We have in-house tooling, fast delivery times, and scalable production capacity that allows our clients to reduce costs, shorten lead times, and obtain parts reliably, punctually, and with exact specifications.

If you're looking to manufacture in Mexico or strengthen your supply chain, EP Metal Stamper is your ideal partner in the production of trailer components.

